

Classic Antarctica

Antarctic Peninsula and the South Shetland Islands

11 and 12 day itineraries

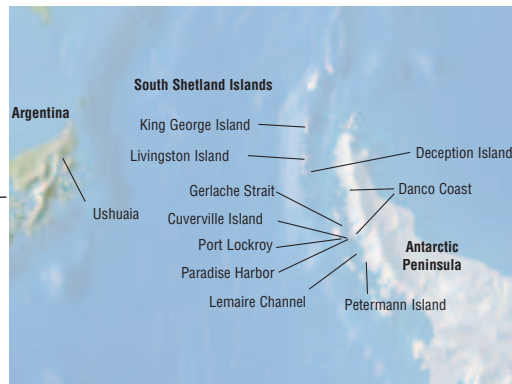
Classic Antarctica offers you the perfect introduction to the White Continent. Between your departure from and return to the port of Ushuaia, Argentina, you will experience the wildlife and scenic highlights of the Antarctic Peninsula and the South Shetland Islands.

Each voyage incorporates as much wildlife viewing as possible, with visits to scientific bases and plenty of time to enjoy breathtaking waterways, glaciers, icebergs and rugged mountains.

No two voyages are exactly alike, no matter which Classic Antarctica voyage you choose. The Captain and Expedition Leader continually assess daily weather conditions and wildlife opportunities, taking advantage of the extended daylight to maximize time ashore. You will become one of the fortunate few to have set foot on the continent of Antarctica.

Every Classic Antarctica expedition includes:

- One night pre-cruise hotel accommodation in Ushuaia with continental breakfast
- **NEW!** A guided excursion to Tierra del Fuego National Park prior to embarkation and a traditional Argentine BBQ *asado* lunch
- Voyage aboard the vessel as indicated in the itinerary, with shipboard accommodation
- All meals throughout the voyage
- All shore excursions and activities throughout the voyage with the exception of some optional activities listed on page 11 of this brochure
- Leadership by experienced expedition staff
- A program of presentations by noted naturalists and other experts
- Zodiac cruising and transfers to and from the ship for shore excursions
- **NEW!** The use of rubber boots for the duration of the voyage
- Comprehensive pre-departure information kit and Antarctic handbook
- Group transfers and baggage handling per itinerary
- All miscellaneous service taxes and port charges throughout the program
- A detailed post-expedition CD-ROM logbook chronicling your voyage
- Daily international news bulletins



Bonus for passengers sailing on our Former Scientific Research Vessels:

- Specially designed expedition parka, which is yours to keep

The itinerary presented here is for the 12-day voyage – the 11-day voyage has one less day along the Antarctic Peninsula.

Day 1 – Ushuaia, Tierra del Fuego, Argentina

Arrive in the southernmost city in the world and transfer independently to the Hotel Los Nires or similar hotel. The remainder of the day is free to explore this 'frontier town' at leisure.

Day 2 – Ushuaia

Spend the morning with a local guide on a group excursion to Tierra del Fuego National Park, and then enjoy a traditional Argentine BBQ *asado* lunch. Embark in the afternoon, settle into your cabin, and meet your Expedition Team before the ship sets sail along the scenic Beagle Channel.

Days 3-5 – Drake Passage & South Shetland Islands

Journey across the famous Drake Passage, named after the 16th-century English navigator Sir Francis Drake - an experience in itself. The ship is accompanied much of the way by albatrosses - including the magnificent Wandering Albatross - along with an impressive variety of other seabirds. Cross the Antarctic Convergence, a natural border where cold polar waters sink beneath the warmer waters of the more temperate zones.

Land is usually sighted for the first time late afternoon on Day 4 - the South Shetland Islands, which lie to the north of the Antarctic Peninsula. Visit vast penguin rookeries, land on beaches ruled by Antarctic fur seals and observe wallowing southern elephant seals. You may also visit one of the many research bases in the archipelago or look for Antarctica's only two flowering plants, which thrive here during the short southern summer. Often the ship sails through the narrow passage leading into the sunken caldera of Deception Island. Here, if the tide allows, you may dip your toes in the thermal waters of Pendulum Cove.

Days 6-9 – Antarctic Peninsula

The Antarctic Peninsula, the most readily accessible part of the White Continent, has some of the best wildlife and scenery. You have plenty of time to experience the special magic of this awe-inspiring wilderness of snow, ice, waterways, and mountains. Expect to see enormous rookeries of Gentoo, Chinstrap and Adélie Penguins. Blue-eyed Shags, Kelp Gulls, Cape Petrels, Snowy Sheathbills and Antarctic Terns are also abundant. You may also encounter Weddell, crabeater and leopard seals, as well as orcas, humpback, and Minke whales.

Our exploration of the Antarctic continent often begins with a visit to the aptly named Paradise Bay, or to nearby Neko Harbor. Glaciers fill the calm waters with an amazing vista of icebergs as you set foot on the Antarctic continent itself.

When visiting Port Lockroy, you enjoy the thriving penguin colonies and visit a recently renovated former British scientific station that serves as one of the most isolated and intriguing museums in the world. The station also acts as a post office from which you can mail postcards home.

If pack ice and icebergs allow, you navigate some of the most beautiful waterways in the world. Two in particular, the Neumayer and Lemaire Channels, are impressive narrow passages between towering rock faces and spectacular glaciers. Some voyages sail south of the Lemaire Channel to Petermann Island, where Adélie and Gentoo Penguins, skuas and Blue-eyed Shags nest close to the landing site.

On our longer voyages, the expedition may also visit the northern tip of the Peninsula to navigate the Antarctic Sound, or 'iceberg alley', where huge tabular icebergs drift north from the Antarctic continent. If weather and ice conditions permit, you land on Paulet Island to see its vast Adélie Penguin rookery.

Days 10-11 – Drake Passage

You bid farewell to Antarctica as you sail north across the Drake Passage. The adventure is not over, as there are more opportunities to watch birds and whales cavorting in the open ocean. Final presentations by our expedition staff enhance the voyage en route to Ushuaia.

Day 12 – Ushuaia

Disembark after breakfast and transfer by bus to the Antarctic Unit office located at the entrance to the pier. If you are departing on the morning flight, the transfer continues to the airport.

Please note: Read this itinerary as a guide only; our exact route and program varies according to ice and weather conditions - and the wildlife we encounter. Flexibility is the key to the success of this expedition. Visits to research stations depend on final permission.

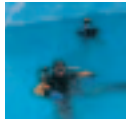


Classic Antarctica Adventure Options



Andrew Mann Wilson

On select sailings, adventure options are available for divers, campers, and sea-kayakers.



B & C Alexander

SCUBADIVING

Ship: *Akademik Shokalskiy*

Expedition Dates: January 7 to 18, 17 to 28 and January 27 to February 7, 2006.

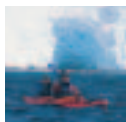
Explore the magical underwater world of Antarctica with experienced Antarctic Dive Masters who guide you through a fantastic and largely unexplored paradise. Dive around naturally sculpted icebergs, encounter rich marine life from soft corals and fish to marine mammals, and experience the remarkable underwater sounds of the frozen continent.

Call to learn more about scuba diving in the Antarctic with Quark Expeditions. Please note that participants must have PADI advanced open water certification or equivalent.

Group size and number of dives: We can accommodate a maximum of 10 divers per departure. Each diver can expect to complete a maximum of four dives during the expedition, subject to weather and water conditions, of course. The maximum dive depth will be about 15 meters (50 feet).

Possible dive sites include: Port Lockroy, Deception Island and Neko Harbor.

Supplement for scuba diving: **US\$595 per person**



B & C Alexander

SEA KAYAKING

Ship: *Professor Multanovskiy*

Expedition Dates: January 31 to February 11, February 10 to 21 and February 20 to March 3, 2006

Ship: *Akademik Shokalskiy*

Expedition Dates: November 10 -21, November 20 to December 1.

Sea kayaking is a fabulous way to explore the little bays and waterways of the Antarctic Peninsula. You use 5-meter (16 foot) Prijon rudder-equipped double sea kayaks, which are very stable, surprisingly comfortable and incredibly tough - perfect for paddling through the icy environment. Each trip is led by two experienced and highly qualified kayak instructors and a

Zodiac safety boat stays in constant communication ready to assist should the need arise.

Group size and number of excursions: There will be a maximum of 10 kayakers per departure and a minimum of four kayak excursions.

Kayaking sites: Possible kayaking sites include Hannah Point/Aitcho Islands, Deception Island, Port Lockroy, Neko Harbor, Paradise Harbor, and Lemaire Channel.

Supplement for sea kayaking: **US\$595 per person**

Call to learn more about sea-kayaking in the Antarctic with Quark Expeditions.



B & C Alexander

ANTARCTIC CAMPING

Ship: *Professor Multanovskiy*

Expedition Dates: January 31 to February 11, February 10 to 21 and February 20 to March 3, 2006

Ship: *Akademik Shokalskiy*

Expedition Dates: November 10 to 21 and November 20 to December 1, 2005

This is your chance to be one of the few who have spent a night camping on the pristine ice of the White Continent. Experienced staff members handle all the logistics.

Group size and number of excursions: You will be one of a maximum of 20 campers who venture ashore for the night. Weather and ice permitting, you will spend one night ashore. All meals are taken on board the vessel.

Camp Sites: Our camp sites are generally close to Port Lockroy, on the shores of Neumayer Channel, and are selected away from vegetated sites and wildlife concentrations to avoid contamination or disturbance.

There is no supplementary charge for this option. Participation will be confirmed at booking on a first come, first served basis.

Rates and Dates

Classic Antarctica - The Antarctic Peninsula & South Shetland Islands

Ways to Save

Early Booking Discount

An early booking discount of US\$250 per person is available on selected departures if deposits are received by February 28, 2005.

Loyalty Discount

Passengers who have sailed with Quark Expeditions in the past are entitled to a 5% discount on all sailings. First-time passengers who book a second sailing will receive a 5% discount on the second voyage.

Twin and Triple Share Program

Request the Twin or Triple Share Program where we match you with a cabin mate of the same gender. Even if we are unable to find a cabin mate for you, no single supplement will be charged.

Aboard the *M/V Orlova*

	Days	Triple	LD Twin	MD Twin	Captain's deck twin	Superior	Amundsen Suite	Early Booking Discount
Nov 8 - Nov 19, 2005	12	\$2,995	\$3,995	\$4,395	\$4,395	\$5,295	\$5,695	\$250
Nov 18 - Nov 29, 2005	12	\$2,995	\$3,995	\$4,395	\$4,395	\$5,295	\$5,695	\$250
Nov 28 - Dec 9, 2005	12	\$2,995	\$3,995	\$4,395	\$4,395	\$5,295	\$5,695	\$250
Dec 8 - Dec 19, 2005	12	\$3,795	\$4,895	\$5,295	\$5,295	\$6,395	\$6,895	n/a
Dec 18 - Dec 28, 2005	11	\$3,795	\$4,895	\$5,295	\$5,295	\$6,395	\$6,895	n/a
Dec 27, 2005 - Jan 6, 2006	11	\$3,795	\$4,895	\$5,295	\$5,295	\$6,395	\$6,895	n/a
Jan 5 - Jan 15, 2006	11	\$3,795	\$4,895	\$5,295	\$5,295	\$6,395	\$6,895	n/a
Feb 1 - Feb 11, 2006	11	\$3,795	\$4,895	\$5,295	\$5,295	\$6,395	\$6,895	n/a
Feb 10 - Feb 20, 2006	11	\$3,795	\$4,895	\$5,295	\$5,295	\$6,395	\$6,895	n/a
Feb 19 - Mar 1, 2006	11	\$3,795	\$4,895	\$5,295	\$5,295	\$6,395	\$6,895	n/a
Feb 28 - Mar 11, 2006	12	\$3,795	\$4,895	\$5,295	\$5,295	\$6,395	\$6,895	\$250

Aboard the *Akademik Shokalskiy*

	Days	Triple	Twin Shared Facilities	Twin Private Facilities	Superior	Amundsen Suite	Adventure Options	Early Booking Discount
Nov 10 - Nov 21, 2005	12	\$3,895	\$4,895	\$5,795	\$6,895	\$7,395	SK/CMP	\$250
Nov 20 - Dec 1, 2005	12	\$3,895	\$4,895	\$5,795	\$6,895	\$7,395	SK/CMP	\$250
Dec 10 - Dec 20, 2005	11	\$4,395	\$5,595	\$6,695	\$7,495	\$8,195	n/a	\$250
Dec 19 - Dec 29, 2005	11	\$4,395	\$5,595	\$6,695	\$7,495	\$8,195	n/a	n/a
Dec 28, 2005 - Jan 8, 2006	12	\$4,995	\$6,195	\$7,195	\$8,395	\$8,995	n/a	n/a
Jan 7 - Jan 18, 2006	12	\$4,995	\$6,195	\$7,195	\$8,395	\$8,995	Scuba	n/a
Jan 17 - Jan 28, 2006	12	\$4,995	\$6,195	\$7,195	\$8,395	\$8,995	Scuba	n/a
Jan 27 - Feb 7, 2006	12	\$4,995	\$6,195	\$7,195	\$8,395	\$8,995	Scuba	n/a

SK/CMP: sea kayaking and camping options

Aboard the *Professor Molchanov*

	Days	Triple	Twin Shared Facilities	Twin Private Facilities	Superior	Amundsen Suite	Adventure Options	Early Booking Discount
Nov 24 - Dec 5, 2005	12	\$3,895	\$4,895	\$5,795	\$6,895	\$7,395	n/a	\$250
Dec 4 - Dec 14, 2005	11	\$4,395	\$5,595	\$6,695	\$7,495	\$8,195	n/a	\$250
Feb 25 - Mar 8, 2006	12	\$4,995	\$6,195	\$7,195	\$8,395	\$8,995	n/a	n/a

Aboard the *Professor Multanovskiy*

	Days	Triple	Twin Shared Facilities	Twin Private Facilities	Superior	Amundsen Suite	Adventure Options	Early Booking Discount
Dec 8 - Dec 18, 2005	11	\$4,395	\$5,595	\$6,695	\$7,495	\$8,195	n/a	\$250
Dec 17 - Dec 27, 2005	11	\$4,395	\$5,595	\$6,695	\$7,495	\$8,195	n/a	n/a
Dec 26, 2005 - Jan 5, 2006	11	\$4,395	\$5,595	\$6,695	\$7,495	\$8,195	n/a	n/a
Jan 22 - Feb 1, 2006	11	\$4,395	\$5,595	\$6,695	\$7,495	\$8,195	n/a	n/a
Jan 31 - Feb 11, 2006	12	\$4,995	\$6,195	\$7,195	\$8,395	\$8,995	SK/CMP	n/a
Feb 10 - Feb 21, 2006	12	\$4,995	\$6,195	\$7,195	\$8,395	\$8,995	SK/CMP	n/a
Feb 20 - Mar 3, 2006	12	\$4,995	\$6,195	\$7,195	\$8,395	\$8,995	SK/CMP	n/a
Mar 2 - Mar 13, 2006	12	\$3,895	\$4,895	\$5,795	\$6,895	\$7,395	n/a	\$250